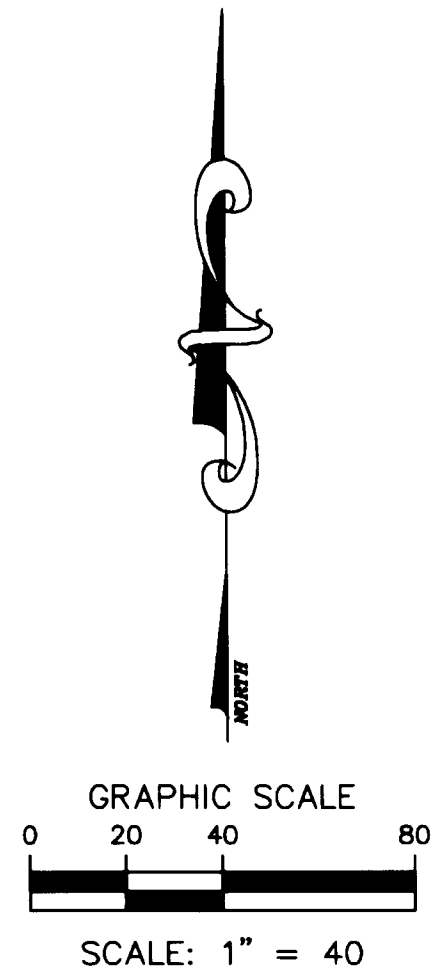
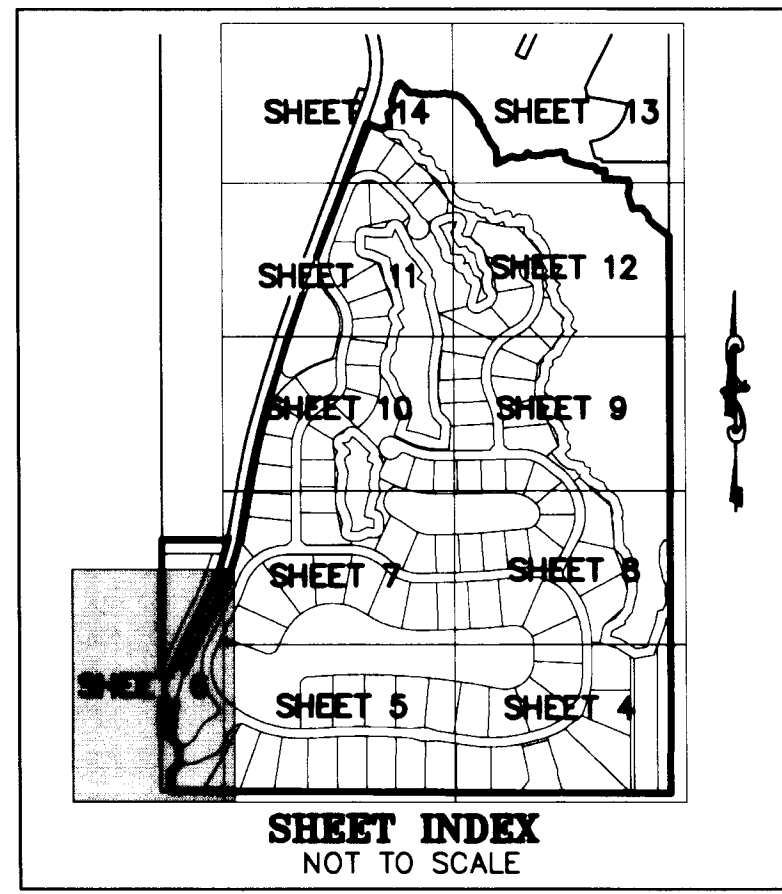


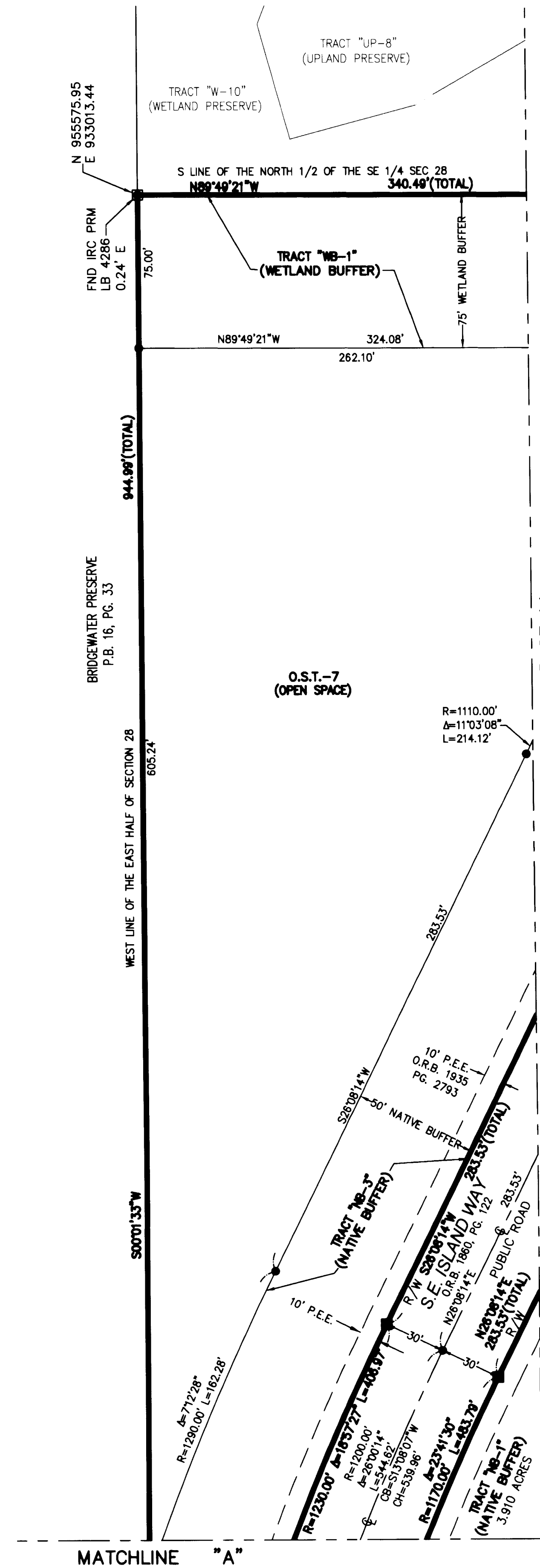
PENNOCK PRESERVE PUD, PHASES 2 & 3

BEING A REPLAT OF "THE OLD PLANTATION PUD", RECORDED IN PLAT BOOK 16 AT PAGE 58, PUBLIC RECORDS OF MARTIN COUNTY, FLORIDA, TOGETHER WITH OTHER LANDS, ALL LYING IN SECTION 28, TOWNSHIP 40 SOUTH, RANGE 42 EAST MARTIN COUNTY, FLORIDA
SHEET 6 OF 14

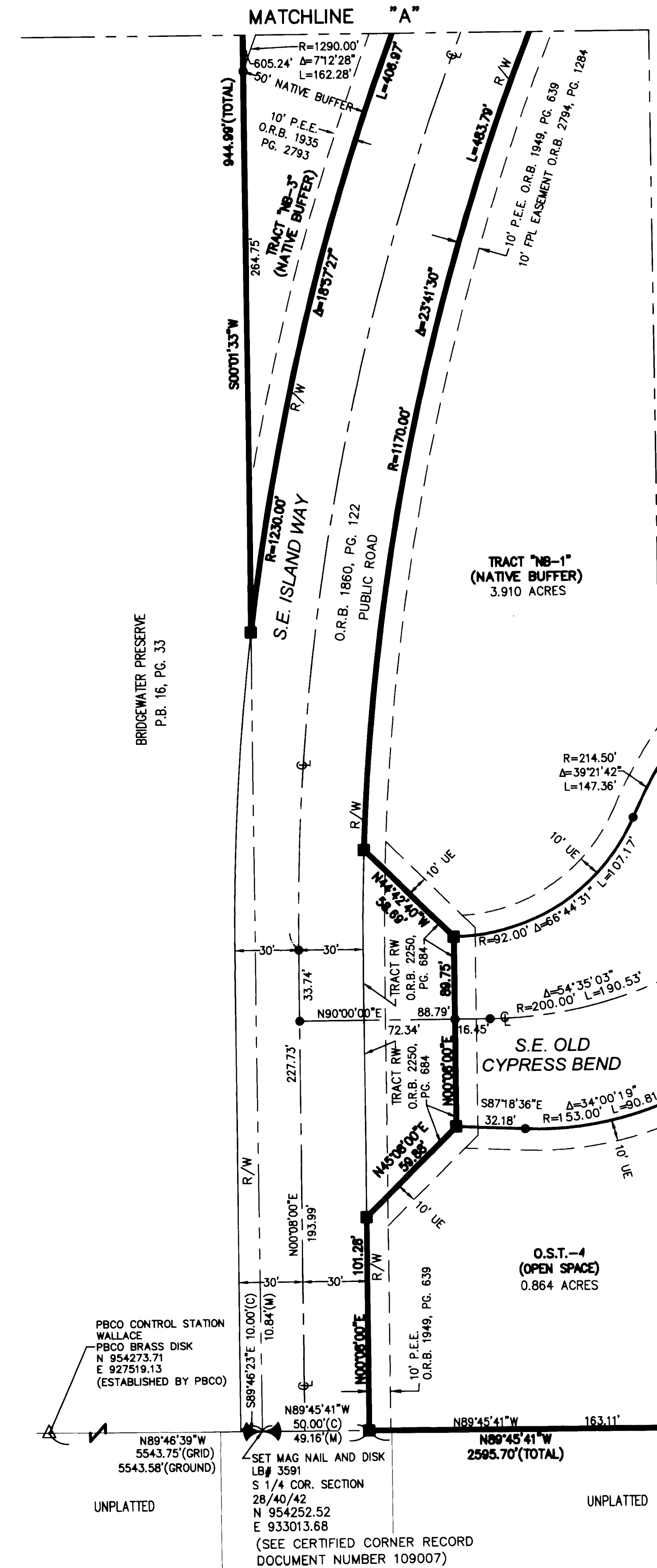
THIS INSTRUMENT PREPARED BY
DAVID P. LINDLEY
OF
CAULFIELD and WHEELER, INC.
SURVEYORS - ENGINEERS - PLANNERS
7900 GLADES ROAD, SUITE 100
BOCA RATON, FLORIDA 33434 - (561)392-1991
CERTIFICATE OF AUTHORIZATION NO. LB3591



NOTES
COORDINATES, BEARINGS AND DISTANCES
COORDINATES SHOWN ARE GRID
DATUM = NAD 83 (90/98 ADJUSTMENT)
ZONE = FLORIDA EAST
LINEAR UNIT = US SURVEY FEET
COORDINATE SYSTEM 1983 STATE PLANE
TRANSVERSE MERCATOR PROJECTION
ALL DISTANCES ARE GROUND UNLESS NOTED OTHERWISE
SCALE FACTOR = 1.0000307
GROUND DISTANCE X SCALE FACTOR = GRID DISTANCE
BEARINGS AS SHOWN HEREON ARE GRID DATUM
NAD 83 (90/98 ADJUSTMENT), FLORIDA EAST ZONE.



MATCHLINE SEE SHEET 7 OF 14



MATCHLINE SEE SHEET 5 OF 14

PBCO CONTROL STATION
WALLACE
PBCO BRASS DISK
N 954273.71
E 927519.13
(ESTABLISHED BY PBCO)

UNPLATTED
N89°46'39"W
5543.75'(GRID)
5543.58'(GROUND)
SET MAG NAIL AND DISK
LB# 3591
S 1/4 COR. SECTION
28/40/42
N 954252.52
E 933013.68
(SEE CERTIFIED CORNER RECORD
DOCUMENT NUMBER 109007)

UNPLATTED